



ADDENDUM NO. 2  
TO BID AND CONTRACT DOCUMENTS  
FOR  
Central Weber Sewer Improvement District  
**Dewatering Building HVAC Improvements Project**



**Engineer Project No.: 70123-000**

November 20, 2024



*PREPARED BY*

Hazen and Sawyer  
10619 South Jordan Gateway, Suite 130  
South Jordan, Utah 84095



This addendum provides additional information and clarifications to the Dewatering Building HVAC Improvements Project. The purpose of this addendum is to ensure that all contractors have a clear and consistent understanding of the Project's requirements and expectations. This addendum is divided into three parts: responses to questions submitted by Contractors and discussed during the site walk on November 15; changes to the specifications that affect the Contractor's scope of work; and lastly, changes to the drawings.

## CLARIFICATIONS/RESPONSES TO QUESTIONS

1. Question: What is the weight capacity of the platform around the presses?
  - a. Answer: Contractor shall be responsible for determining platform weight capacity and planning construction activities accordingly.
2. Question: What is the routing for power to the mechanical mezzanine?
  - a. Answer: No specific routing has been identified. Contractor to field coordinate routing with owner.
3. Question: Project Spec Section 23 29 23 calls out ABB VFD's Only, can you confirm?
  - a. Answer: Remove Section 23 29 23 in its entirety, as updated by this Addendum. Provide variable frequency drives in accordance with Section 26 29 23 – LOW VOLTAGE VARIABLE FREQUENCY MOTOR CONTROLLERS.
4. Question: During the bid walk it was observed that the existing install has all light fixtures installed with Liquid Tight Flexible Metal Conduit with regular malleable fittings used to connect to light fixtures. Is the Electrical contractor to reuse this in the replacement of all light fixtures with existing supports? Section 260533.13
  - a. Answer: The intent is for the Electrical Contractor to replace the existing flexible metal conduit to meet the requirements of Section 26 05 33.13 and to replace the existing lighting supports. Refer to detail E-26-0606 added by this addendum for lighting support requirements.
5. Question: Section 26 29 23 2.01. Is it only acceptable to have the same manufacturer of the VFD to match manufacturer of the Motor Control Center?
  - a. Answer: Correct, the variable frequency drives installed in the motor control center shall be the same manufacturer as the motor control center in accordance with Section 26 24 19, 1.01, B.
6. Question: Can you explain what the extent of the new Fire Alarm Control System Function? Is intended for Air Ducts only?
  - a. Answer: The intent is for the fire alarm system to meet the minimum requirements to satisfy NFPA 820 and to integrate with the duct detectors/HVAC controls. Contractor shall provide a fire alarm system as noted on Drawing E003, General Note 4, and in accordance with Specification Section 28 46 20.
7. Question: Can you send the SOW work Provided by SKM. Communications / UPS / integration / programming / required instruments?
  - a. Answer: The exact SOW was not pre-negotiated with SKM. Contractor shall be responsible for coordinating SOW directly with SKM.



This Addendum No. 2 modifies the Proposal Documents for Central Weber Sewer Improvement District's **Dewatering Building HVAC Improvements Project** and shall become part of the Contract Documents for this Project.

Bidders shall acknowledge receipt of Addenda by number in the space provided for that purpose in Specification Section 00 40 00 – Bid Form.

I. CONTRACT DOCUMENTS: CONTRACT/TECHNICAL SPECIFICATIONS

A. Section 23 29 23 – VARIABLE FREQUENCY DRIVES

Remove this section in its entirety.

II. CONTRACT DOCUMENTS: DRAWINGS

A. Drawing E004

- i. Replace note 1 with the following:

REPLACE EXISTING LIGHT FIXTURES WITH NEW FIXTURES SHOWN. UTILIZE EXISTING POWER AND SWITCHING CIRCUITS FOR NEW FIXTURES. REPLACE EXISTING FLEXIBLE METAL CONDUIT TO MEET REQUIREMENTS OF SECTION 26 05 33.13. REPLACE EXISTING LIGHTING MOUNTING SUPPORTS WITH NEW MEETING THE REQUIREMENTS OF E-26-0606. ADJUST LOCATION OF LIGHT FIXTURES AS REQUIRED TO COORDINATE WITH NEW DUCTWORK.

B. Drawing E006

- i. Replace note 1 with the following:

REPLACE EXISTING LIGHT FIXTURES WITH NEW FIXTURES SHOWN. UTILIZE EXISTING POWER AND SWITCHING CIRCUITS FOR NEW FIXTURES. REPLACE EXISTING FLEXIBLE METAL CONDUIT TO MEET REQUIREMENTS OF SECTION 26 05 33.13. REPLACE EXISTING LIGHTING MOUNTING SUPPORTS WITH NEW MEETING THE REQUIREMENTS OF E-26-0606. ADJUST LOCATION OF LIGHT FIXTURES AS REQUIRED TO COORDINATE WITH NEW DUCTWORK.

C. Drawing E006

- i. Replace note 1 with the following:

REPLACE EXISTING LIGHT FIXTURES WITH NEW FIXTURES SHOWN. UTILIZE EXISTING POWER AND SWITCHING CIRCUITS FOR NEW FIXTURES. REPLACE EXISTING FLEXIBLE METAL CONDUIT TO MEET REQUIREMENTS OF SECTION 26 05 33.13. REPLACE EXISTING LIGHTING MOUNTING SUPPORTS WITH NEW MEETING THE REQUIREMENTS OF E-26-0606. ADJUST LOCATION OF LIGHT FIXTURES AS REQUIRED TO COORDINATE WITH NEW DUCTWORK.

D. Drawing E020

- i. Add detail E-26-060 in attached FIGURE A2-E020-001 to Drawing E020.

E. Drawing I005



- i. Move TSL H0643 to right after the Indirect Gas Furnace (GF-DW-001).

Attachments:

- Figure A2-E020-001

This Addendum, including attachments (if any), shall become part of the Contract and all provisions of the Contract shall apply thereto.

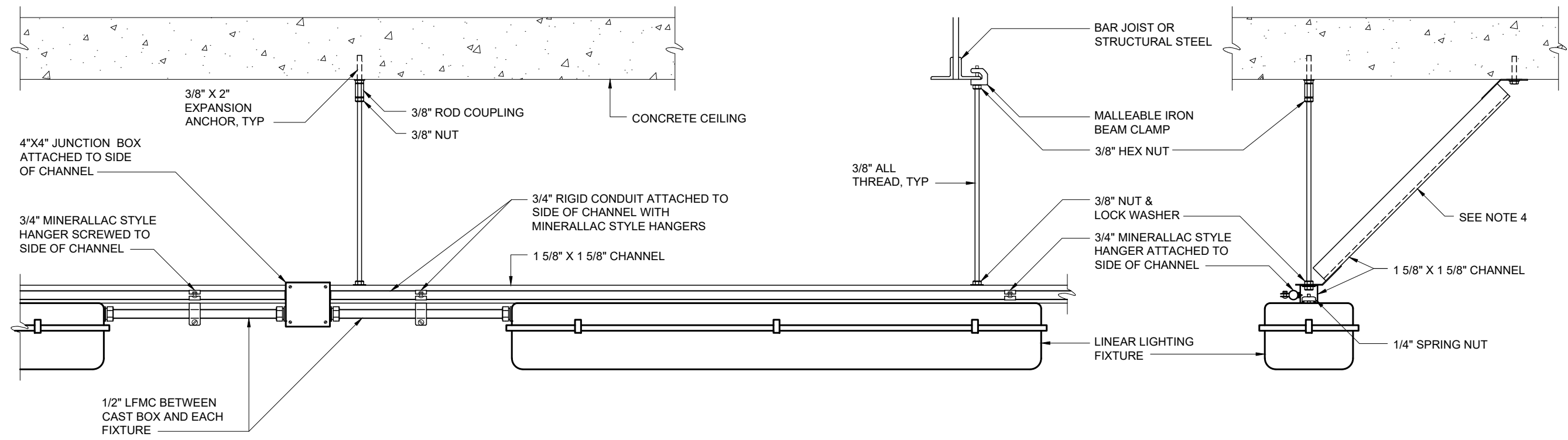
Bidders shall acknowledge receipt of all Addenda by number in the space(s) provided in the Proposal Documents.

Hazen and Sawyer

A handwritten signature in blue ink that reads "Christopher N. Thunhorst".

Chris Thunhorst, P.E.

NO. 11876335-2202



**NOTES:**

1. ADDITIONAL SEISMIC SUPPORTS MAY BE REQUIRED, SEE CODE SUMMARY DRAWING AND DRAWING E1 FOR SEISMIC CLASSIFICATIONS.
2. CONDUIT TYPE AND MATERIALS OF CONSTRUCTION FOR SUPPORTS AND HARDWARE SHALL BE AS REQUIRED FOR THE AREA IN WHICH THE FIXTURE IS INSTALLED AS SHOWN ON THE DRAWINGS AND IN ACCORDANCE WITH THE SPECIFICATIONS.
3. REFER TO AREA DESIGNATION DRAWINGS AND SPECIFICATIONS FOR REQUIRED MATERIALS OF CONSTRUCTION.
4. 45 DEGREE ANGLE BRACES SHALL BE INSTALLED TO PREVENT LATERAL MOVEMENT OF FIXTURE SUPPORTS. BRACES SHALL BE INSTALLED AT 8' INTERVALS ALONG ENTIRE LENGTH OF SUPPORT CHANNEL. TRANSVERSE MOVEMENT SHALL BE PREVENTED IN SIMILAR FASHION AT EACH END OF THE SUPPORT CHANNEL.

**SUPPORT CHANNEL MOUNTED LINEAR FIXTURES  
E-26-0606**

**Hazen**

HAZEN AND SAWYER  
10619 SOUTH JORDAN GATEWAY, SUITE 130  
SOUTH JORDAN, UT 84095



**ADDENDUM NO 2**

**CENTRAL WEBER SEWER IMPROVEMENT DISTRICT  
DEWATERING BUILDING HVAC IMPROVEMENTS**

FIGURE A2 - E020 - 001  
ADDITION TO DRAWING E020